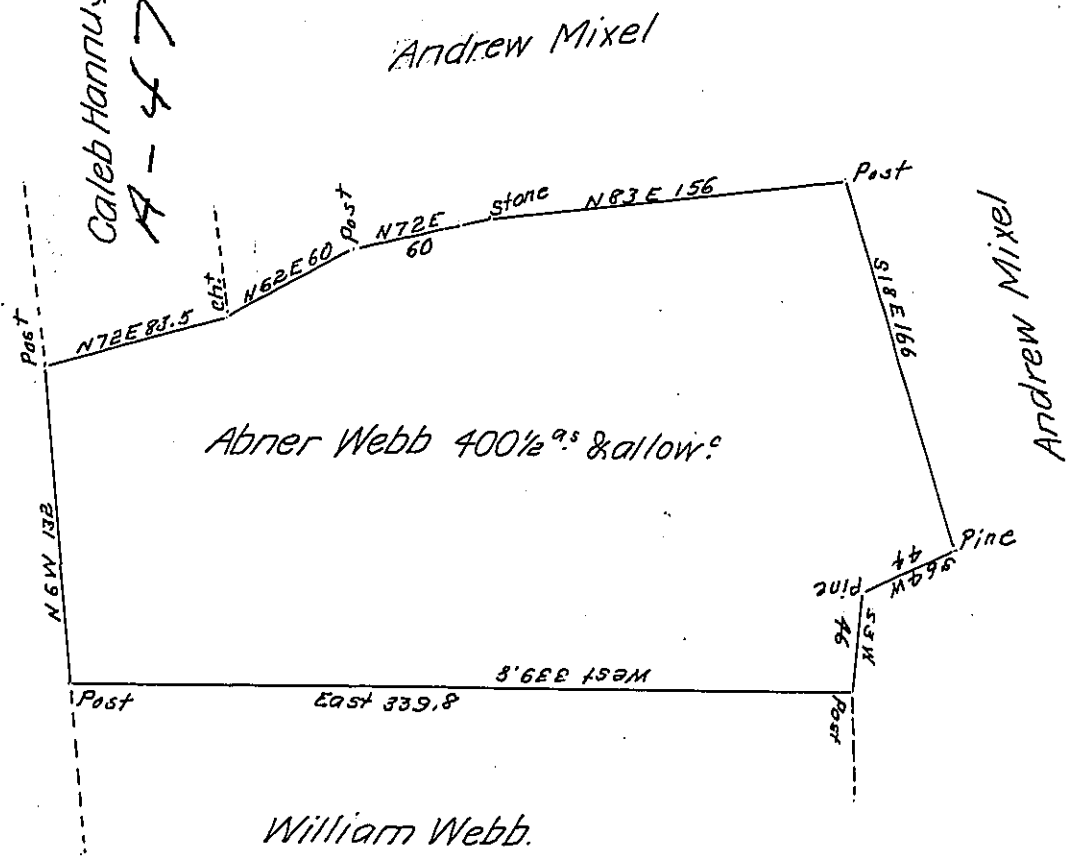


C-226-13  
Nathan Scholfield

Caleb Hannus  
A-47-111



William Webb.

Pg. 52

Situated in Morrison's Cove, Woodberry Township, Bedford County Containing 400 1/2 acres and allowance of Six per Cent for Roads &c. Surveyed for Abner Webb the 10th Day of June A.D. 1794. In pursuance of a warrant dated August 30th A.D. 1793.

Examined by me Sept: 20th 1808.

To Samuel Cochran Esq:

John Anderson

Surveyor General.

Deputy Sur:

Now Middle Woodbury Twp.

IN TESTIMONY that the above is a copy of the original remaining on file in the Department of Internal Affairs of Pennsylvania, made conformably to an Act of Assembly approved the 16th day of February, 1833, I have hereunto set my Hand and caused the Seal of said Department to be affixed at Harrisburg, this Ninth day of July 1907

Henry Horrocks,  
Secretary of Internal Affairs.